

Support for Windows 8 / Windows Server 2012 / MAC OS X 10.8

We updated our drivers and software to support our Windows 8, Windows Server 2012, and MAC OS Mountain Lion users.

In some models, MAC OS and some drivers are not supported.

Supported editions for Windows

The following editions of Windows 8 and Windows Server 2012 will be supported:

Windows® 8 (x86/x64)	Windows Server® 2012 Datacenter
Windows® 8 Pro (x86/x64)	Windows Server® 2012 Standard
Windows® 8 Enterprise (x86/x64)	Windows Server® 2012 Essentials
	Windows Server® 2012 Foundation

Drivers and software that are not compatible with Windows 7 and Windows 2008 will not be compatible with Windows 8 and Windows Server 2012.

For XPS printer driver and XPS direct print utility, currently we do not support Windows 8 and Windows Server 2012.

Installation for Windows

■ Installation

Driver installation follows the same process as Windows 7 and Windows Server 2008.

Please use the driver installer on the installation disk.

If the driver installer does not start automatically, double-click the CD or DVD drive that you inserted the installation disk.

■ Warning during installation

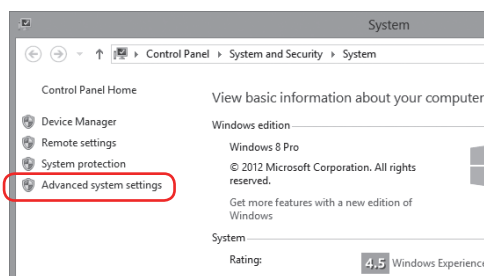
- When the “User Account Control” window is displayed, click [Yes].
- When a message regarding the certificate is displayed, click [Install this driver software anyway].
- When the “Windows Security Alert” screen is displayed, click [Install] or [Install this driver software].

■ Installing a local printer or scanner

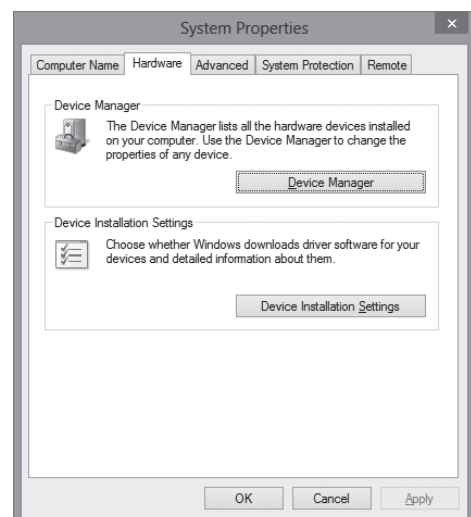
Before you start the installation, please change the setting of Windows not to download the driver from the web site. If you do not change this setting, installation may take longer time.

After you have finished the installation, you may better return the setting that you changed.

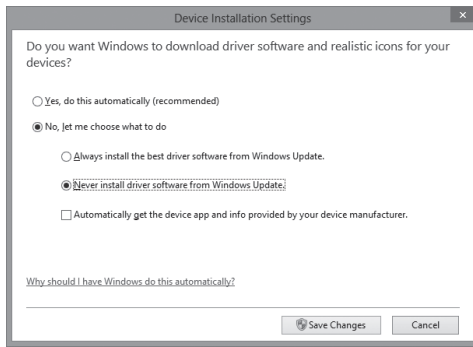
- 1 Display the “Desktop” screen, and start “File Explorer”.
- 2 Right-click “Computer” and click “Properties”.
- 3 Click “Advanced system settings” in the navigation window.



- 4 Click the “Hardware” tab, then [Device Installation Settings].



- 5** Check “No, let me choose what to do”, then “Never install driver software from Windows Update”.



- 6** Click [Save Changes] and close the “System Properties” screen.

■ Setting the printer port

To open the “Devices and Printers” screen follow the instructions below.

On Windows 8

Right-click on the “Start” screen and click “All apps” → “Control Panel” → “Hardware and Sound” → “Devices and Printers”

On Windows Server 2012

Click “Control Panel” on the “Start” screen → “Hardware” → “Devices and Printers”

■ Deleting drivers

You can delete drivers by following the instructions below.

On Windows 8

Right-click on the “Start” screen and click “All apps” → “Control panel” → “Programs” → “Programs and Features” → select the driver you want to delete and then click “Uninstall”.

On Windows Server 2012

Click “Control Panel” on the “Start” screen → “Programs” → “Programs and Features” → select the driver you want to delete and then click “Uninstall”.

Support for MAC OS X 10.8 Mountain Lion

We now support MAC OS X 10.8 Mountain Lion for products that currently support MAC OS. Driver installation follows the same process as MAC OS X 10.7.

In some models, MAC OS is not supported.